
S U P P L Y I N G C L E A N A I R T O I N D U S T R Y

MODEL PORTA AIR™

Portable Cartridge System



The Portable Cartridge System from Air Quality Engineering Inc. is a manually cleaned media air cleaner for use in intermittent duty source capture applications in industry. The Porta Air captures airborne contaminants such as welding smoke, grinding dust, plastic dust and other fine particles.



**AIR QUALITY
ENGINEERING**

Manufacturer and Worldwide Distributor of Air Cleaning Systems for Over 30 Years

PORTA AIR™ FEATURES & SPECIFICATIONS

Principles of Operation:

Airborne contaminants enter the Porta Air through the hood/arm assembly at a rate of 1100 cubic feet of air per minute (cfm). Heavy particles are propelled downward through the venturi and into the clean out trays. Small submicron particles are then trapped within the pleats of the two 99.8% efficient cartridge filters. The cleaned air is then gently diffused out the bottom of the unit. Replace filters when the differential pressure gage indicates that the cartridge filters are dirty.

STANDARD FEATURES :

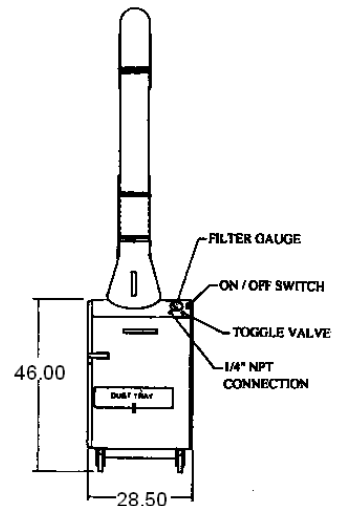
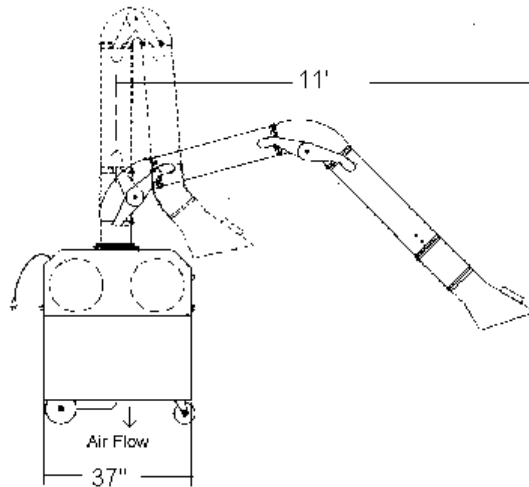
- Air volume - 1100 cfm
- Externally supported 11' arm. Full 360° rotation.
- 1.5 horse power motor
- 382 square feet of filter media
- 99.8% efficient at .5 micron
- Large 8" diameter front wheels
- Quiet operation
- Three-year limited warranty

OPTIONAL FEATURES :

- Halogen light
- 2nd stage HEPA filter

SPECIFICATIONS :

DIMENSIONS:	46"H x 28.5"W x 37"D
WEIGHT:	Approx. weight 375 lbs shipping
ARM ASSEMBLY	11' long x 8" diameter. Externally supported arm with full 360° arm rotation. Arm assembly incorporates a gas spring which provides easy up and down movement.
HOOD:	18 Ga. aluminum hood with handle. Hood moves easily vertically and horizontally.
AIRFLOW VOLUME:	1100 cfm
MOTOR:	1.5 HP thermally protected
BLOWER:	Direct drive, backward incline
CABINET CONSTRUCTION:	16 Ga. welded CRS steel
CONTROLS:	All models include control circuitry and thermal protection.
POWER:	120V/60 hz/14 amp running or 208-240V/60 hz/8 amp running. Ten-foot power cord with molded plug standard on single phase models, 3 phase models available at no extra charge.
CASTERS:	Two large 8" diameter semi-pneumatic (front) wheels and two heavy duty swivel casters (back)
FINISH:	Durable powder coat paint
FILTRATION:	Two high efficiency cartridge filters: 12 3/4" (diameter x 22" 382 sq. ft. total, 99.8% efficient at .5 micron
FILTER ACCESS:	Hinged side door
FILTER GAGE:	Dirty filter gage indicates pressure up to 10" H 2O
NOISE LEVEL:	73 dBA at 6 "
WARRANTY:	Limited three year warranty



**AIR QUALITY
ENGINEERING**

7140 Northland Drive North, Brooklyn Park, MN 55428-1520 USA

FAX: (763) 531-9900 EMAIL: info@air-quality-eng.com WEB SITE: www.air-quality-eng.com

TOLL FREE: 1-800-328-0787 PHONE: (763) 531-9823